

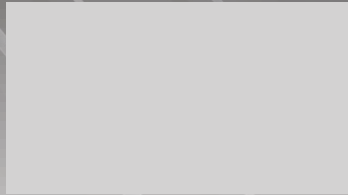


# Metal America

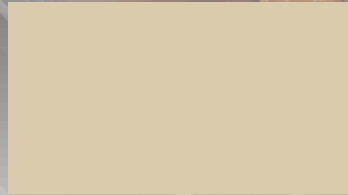
Roofing & Siding



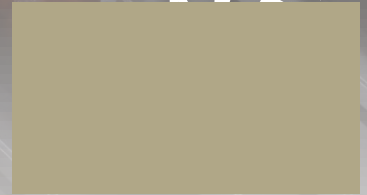
Arctic White



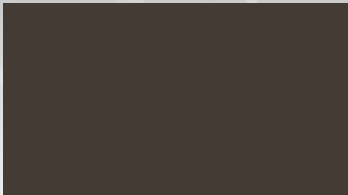
Polar White



Light Stone



Desert Sand



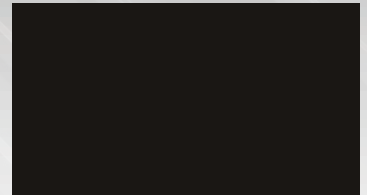
Burnished Slate



Koko Brown



Dark Brown



Matte Black



Ash Gray



Old Town Gray



Charcoal



Rural Red



Ivy Green



Fern Green



Colony Green



Gallery Blue



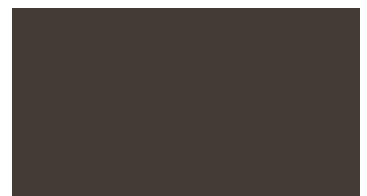
Copper Metallic



Black - Crinkle Finish



Charcoal - Crinkle Finish



Burnished Slate - Crinkle Finish

\*Only available for 29-gauge and 26-gauge metals



Roll Forming Plant  
7728 Corn Maze Way  
Post Falls, ID 83854

1-855-METALUS  
sales@metalamerica.com  
www.MetalAmerica.com



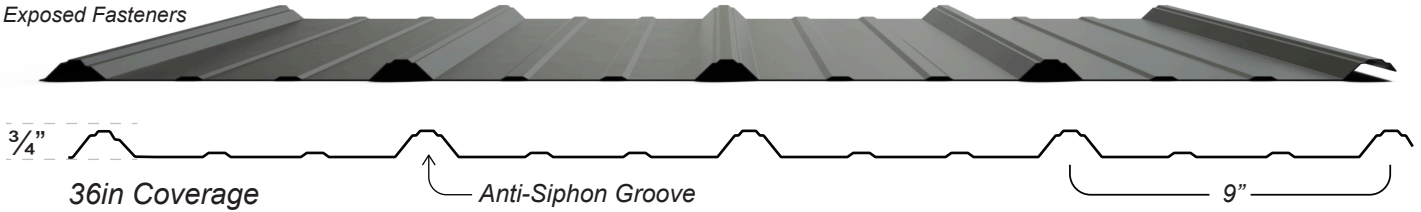
PROUDLY FINISHED WITH  
**SHERWIN-WILLIAMS**  
Coil Coatings

Sherwin-Williams® and WeatherXL™ are trademarks of SWIMC LLC.

## Tuff Rib

Exposed Fasteners

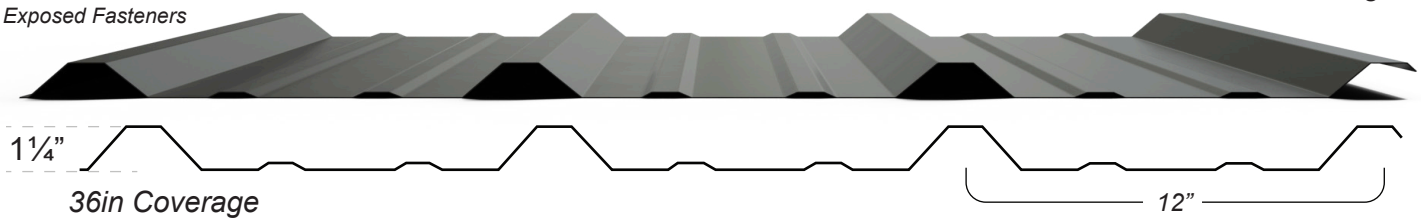
29 ga



## PBR

Exposed Fasteners

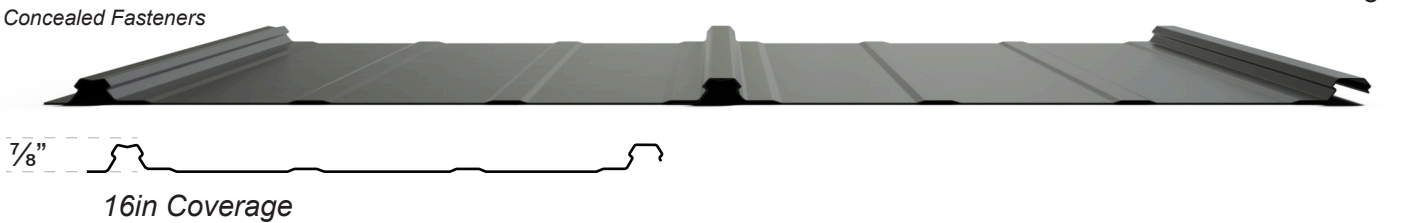
26 ga



## Quickloc

Concealed Fasteners

26 ga



Metal America is proud to partner with **Sherwin-Williams®**, the leading manufacturer of coil coating in the United States.

## Explore the Advantages: Superior Metal Roofing & Siding

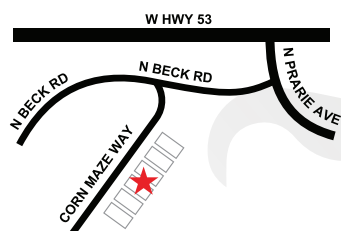
- **WeatherXL™ Coating:** Advanced durability and color retention.
- **Stain & Abrasion Resistant:** Built to last in tough conditions.
- **Versatile Use:** Ideal for various construction needs.
- **Sustainable Quality:** Our Steel and Coatings Set the Standard.
- **40-Year Warranty:** Long-term reliability.

## SHERWIN-WILLIAMS® WeatherXL™ COIL COATING

Metal America brings you top-tier metal siding with the advanced Sherwin-Williams WeatherXL™ coil coating. Every component of our products, from the metal to the coatings, is designed with sustainability in mind by enabling durable, long-lasting structures that resist the need for repair or replacement. WeatherXL™, a unique silicone-modified polyester (SMP) resin system, is engineered for residential, agricultural, and commercial construction. Experience unparalleled durability with

our two-coat system, offering exceptional resistance to stains, abrasions, and metal marking. This coating ensures your metal withstands fabrication, transit, and construction challenges, reducing the risk of cracking and marring. Enhanced with ceramic, inorganic pigments, WeatherXL™ is renowned for its superior weatherability, consistent color quality, and resistance to fading and chalking.

Trust in our 40-year paint warranty, backed by extensive weather testing. Discover more about our steel products and specialty finishes at [www.metalamerica.com](http://www.metalamerica.com).



**Roll Forming Plant**  
7728 Corn Maze Way  
Post Falls, ID 83854

To learn more about steel products and specialty paint finishes offered by Metal America please visit our website [www.metalamerica.com](http://www.metalamerica.com).

